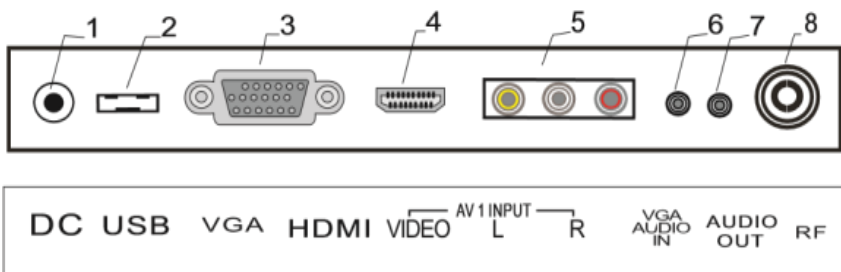


LCD TV Manual

Model: PE1210



1.DC:12V DC Power input

2.USB:USB input teminal

3.VGA IN: connected with computer signal input terminal

4.HDMI : HDMI video input terminal

5.AV1 IN:AV1 video input terminal

6.PC Audio input: PC Audio Input terminal

7.AUDIO OUT: audio output terminal

8.RF IN: connected with antennal or cable TV to watch

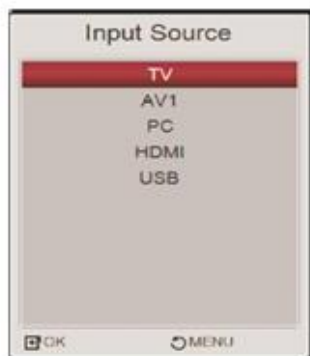
Operation and Function Description of Menu

SOURCE

Press the INPUT button to display the menu , use the ▲ and ▼ button to select the required mode, press the OK Button to confirm.

This LCD TV includes the following 8 modes.

- 1.TV:ANALOG TV MODE
- 2.AV1:VIDEO/AUDIO INPUT MODE
- 3.PC:PC INPUT MODE
- 4.HDMI:HIMI SIGNAL INPUT MODE
- 5.USB:USB MEDIA INPUT MODE



MENU of the PICTURE function

Press MENU button on the front panel or LCD-MENU on the remote control to display the main menu.

- a. Press ▼/▲ button to select PICTURE in the main menu.
- b. Press ►/ENTER(OK) button to enter sub-menu.
- c. Press ▼/▲ button to select the option that you want to adjust in the PICTURE menu.
- d. Press ◀/▶ button to adjust.
- e. When you are satisfied with your adjustment, press the LCD-MENU or EXIT button to return to the previous menu.



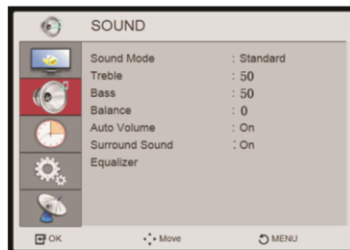
1. **Picture Mode:** Press the ▼/▲ button to select the Picture mode , Available Picture mode: User / Mild / Standard / Dynamic
2. **Contrast:** Press ▼ / ▲ button and then use ◀ / ▶ to adjust the contrast of the picture.
3. **Brightness:** Press ▼/▲ button and then use ◀ / ▶ to adjust the brightness of the picture. After adjust the value you want, press LCD-MENU button to return to the preview MENU.
4. **Color:** Press ▼/▲ button and then use ◀ / ▶ to adjust the colour saturation .
5. **Sharpness:** Press ▼ / ▲ button and then use ◀ / ▶ to adjust the sharpness of your TV. The suitable sharpness can make the picture look more clearer.
6. **Tint:** Press the ◀ / ▶ button to select the Tint.(NTSC Optional)
7. **Color Temperature:** Press ▼ / ▲ button and then use ◀ / ▶ to adjust the optimum colour temperature mode to suit your eyes for viewing .The picture looks more brighter when the COLOUR TEMPERATURE is higher.
8. **Aspect Ratio:**
9. **Noise Reduction:**

Operation and Function Description of Menu

MENU of the SOUND function

Press MENU button on the front panel or LCD-MENU on the remote control to display the main menu.

- a. Press ▼/▲ button to select SOUND in the main menu.
- b. Press ►/ENTER(OK) button to enter sub-menu.
- c. Press ▼/▲ button to select the option that you want to adjust in the SOUND menu.
- d. Press ◀/▶ button to adjust.
- e. When you are satisfied with your adjustment, press the LCD-MENU or EXIT button to return to the previous menu.



1. SOUND Mode:Select Sound Mode in SOUND menu. (Available sound mode: Standard, Music, Movie, Sports, User.)

EASY WAY: You can press SMODE button repeatedly.
on the remote control to select the Sound Mode directly.

2. TREBLE: Press ▼ / ▲ button and then use ◀ / ▶ to increase or decrease the level of the higher-pitched sounds.

3. BASS : Press ▼ / ▲ button and then use ◀ / ▶ to increase or decrease the level of the lower-pitched sounds.

4. BALANCE: Press ▼ / ▲ button and then use ◀ / ▶ to adjust the audio output between left and right speakers.

5. Auto Volume:Press On/Off by using ◀ / ▶ .

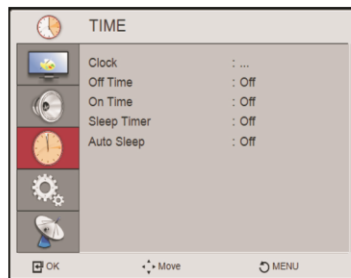
6. Surround Sound:Press Off / Surround / TruSurround by using ◀ / ▶ .

7. EQ: Press ◀ / ▶ button Select 120Hz /500Hz/1.5KHz/5KHz/10KHz

MENU of the TIME function

Press MENU button on the front panel or LCD-MENU on the remote control to display the main menu.

- a. Press ▼/▲ button to select TIME in the main menu.
- b. Press ►/ENTER(OK) button to enter sub-menu.
- c. Press ▼/▲ button to select the option that you want to adjust in the TIME menu.
- d. Press ◀/▶ button to adjust.
- e. When you are satisfied with your adjustment, press the LCD-MENU or EXIT button to return to the previous menu.



1. Clock: Press ► to Clock menu, Press ▼ / ▲ to select Date / Month /Year/ Hour/ Minute. Press ◀ / ▶ button to adjust.

2. Off Time: :Press ► to Off Timer menu .

3. On Time: Press ► to On Timer menu .

4. Sleep Timer: Press ▼/▲button to select . Press the ◀ / ▶ button to change as following:

Off→10Min→20Min→30Min→60Min→90Min→120Min→180Min→240Min

5. Auto Sleep: Press ◀ / ▶ button to select No/Off.

Operation and Function Description of Menu

MENU of the OPTION function

Press MENU button on the front panel or LCD-MENU on the remote control to display the main menu.

- Press ▼/▲ button to select Option in the main menu.
 - Press ►/ENTER(OK) button to enter sub-menu.
 - Press ▼/▲ button to select the option that you want to adjust in the Option menu.
 - Press ◀/▶ button to adjust.
 - When you are satisfied with your adjustment, press the LCD-MENU or EXIT button to return to the previous menu.
- OSD Language:** Use ◀/▶ to select the language in the language menu (available language: English, Italian, Espanol, Portuguese, French, German). It also can be selected in the First Time Installation.
 - Country:** Use ◀/▶ to select the Country.
 - OSD Animation:** Press On/Off by using ◀/▶.
 - Restore Factory Default:** Press ENTER or ► button to reset the TV to the factory default.



MENU of the CHANNEL function

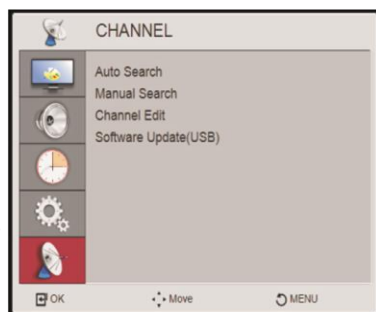
Press MENU button on the front panel or LCD-MENU on the remote control to display the main menu.

- Press ▼/▲ button to select CHANNEL in the main menu.
 - Press ►/ENTER(OK) button to enter sub-menu.
 - Press ▼/▲ button to select the option that you want to adjust in the CHANNEL menu.
 - Press ◀/▶ button to adjust.
 - When you are satisfied with your adjustment, press the LCD-MENU or EXIT button to return to the previous menu.
- Auto Tuning:** This option allows you to tune the channels that can be received automatically.

Note: Before you perform Auto Tuning, you must choose the country where you are by selecting COUNTRY option

You can press LCD-MENU button to stop auto tuning and close the OSD menu .

- Manual Tuning:** This option allows you to perform Manual Tuning. Press ◀/▶ to select the suitable option.
- Programme Edit:**
- Software Update(USB).**



USB QUICK USER GUIDE

PURPOSE:

Users could follow steps below when operating USB.

MAIN MENU:

You can display the input source menu by pressing the SOURCE on the remote control or TV/AV on the front panel, press ▼/▲ key to select Hi-DMP, press "ENTER" or "►" key to confirm. Press ◀/ ▶ keys to navigate to different selection. And the relevant selection will be HIGHLIGHTED



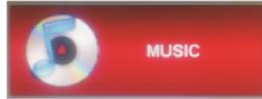
Photo Player



During Highlighting JPEG, press the ◀/ ▶ key, it will switch to the JPEG menu. Press ENTER or OK keys to navigate and preview the pictures. Press ►|| key when highlighting one picture. It will display the whole picture and start slide show. Press EXIT key to return back to the Photo clips menu. Press SOURCE key to return back to the Main menu .

USB QUICK USER GUIDE

Music Player

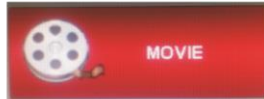


1. The user can play music files via the Music player. Press ▲/▼ or ◀/▶ buttons to browse files, then select you desired one.
2. Press ▶II button to Play, then the playing interface will display on the screen.

While the music is playing, you can operate as below:

3. Press ▼/▲ buttons to play the previous/next file.
4. Press VOL ◀▶ buttons to control volume.
5. Press ▶II button to play/pause the music
6. Press I◀◀/▶▶I buttons to fast retrograde/fast forward

Movie Player



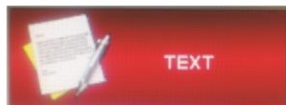
The user can play movie files via the Movie player. you can press▲/▼/◀/▶ keys to, then select your desired file and press the ENTER/Enter to play.

1. Press ▲/▼/◀/▶ buttons to browse files, then select you desired one.
2. Press ENTER button to Play, then the playing interface will display on the screen, you can switch between Pause and Play..

While the movie is playing, you can operate as below:

3. Press▲/▼/◀/▶ buttons to play the previous/next file.
4. Press VOL ◀▶ buttons to control volume.
5. Press ▶II to play/pause the movie.
6. Press I◀◀/▶▶I buttons to fast retrograde/fast forward the playing file.

TEXT Player



The user can play Text files via the Text player. . you can press▲/▼/◀/▶ keys to, then select your desired file and press the ENTER/Enter to play.

1. Press ▲/▼/◀/▶ buttons to browse files, then select you desired one.
2. Press ENTER button to Play, then the playing interface will display on the screen,
3. Press▲/▼/◀/▶ buttons to play the previous/next file.
4. Press EXIT button to return to the upper menu.

Trouble shooting

Problems	Check
No picture	Check if the power is plugged in . Check if the Power switch is in “ on “ position
No sound	Check if the volume is set to minimum or mute position
Noise sound	Make the transfer of any contagious generates IR away from the television.
Remote control not working	Check if the batteries are working Check if anything is blocking the sensor .
NO TV signal	Check if the TV/AV is set to TV . Check if the antenna is connected Check if the TV is installed correctly
Picture too light or dark	Adjust Colour ,brightness ,Contrast .
lose colour / snow /ghost images	Check if Antenna is broken/disconnected/damaged .
Poor reception	Adjust “ fine tuning”
Stripes on Picture	Check if there is interference from other broadcasting sources .

Safety Information



The lightning flash with arrowhead symbol, within an equilateral triangle, is intended to alert the user to the presence of un-insulated "dangerous voltage" within the product's enclosure that may be of sufficient magnitude to constitute a risk of electric shock to persons.



The exclamation point within an equilateral triangle is intended to alert the user to the presence of important operating and maintenance (servicing) instructions in the literature accompanying the appliance.



Correct disposal of this Product

Waste Electrical & Electronic Equipment (WEEE)

The crossed out "Wheeled bin" is intended to show that this appliance must not be placed with ordinary household waste at the end of its useful life. To prevent possible harm to the environment or human health from uncontrolled waste disposal, please keep separate from other household waste and recycle it responsibly to promote the sustainable reuse of material resources.

Household users should contact either the retailer where you purchased the product, or their local government office for details of where and how you can take this item for environmentally safe re-cycling.

Environment:

Working temperature: 5 °C~35 °C

Working humidity: 20%~80%

Storage temperature: -15 °C~45 °C

Storage humidity: 10%~90%

System: PAL / SECAM

Status displaying method: On screen display

Function adjustment indicator: Menu display

RF aerial input: 75 ohm unbalanced

AV video input: 75 ohm, 1.0Vp-p, RCA

AV audio input: 10k ohm, 0.5Vrms
